

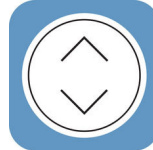


LANDER EXECUTIVE

PROGRAMMING AND CONTROLLING YOUR DESK



Your Lander Executive Desk's intuitive hand controller is designed to help you transition seamlessly to a sit-stand work style.



Download the free mobile app!

For easy programming, advanced controller options and instructions use the QR code at the bottom of the page or visit www.imovr.com/lander-app

SET YOUR FAVORITE HEIGHTS

Your Lander Executive Desk can store up to 4 of your favorite height positions. It makes getting to your next position fast and easy.

Here's how you can set your height favorites:

1. Raise or lower your desk to the height you want to save.
2. Tap the "Star" button repeatedly until the display shows the position you want to save (1, 2, 3, or 4).

Note: Make sure not to tilt the controller.

3. Immediately press and hold the "Star" button for several seconds. (Note: You must do this while the position number is still flashing.)
4. After the controller finishes blinking, your height favorite is saved.



To erase all your height favorites, press and hold the "Star" button for 8 seconds.

DESK HEIGHT LIMITS

In case the desk cannot be operated in its entire span (e.g. a shelf is blocking the upwards movement or a filing cabinet is placed under the desk and blocking the downwards movement), it is possible to set an upper limit and a lower limit for the desk height.

Setting upper limit

1. Adjust desk to maximum allowable height.
2. Press "Bluetooth" and tilt controller up at the same time until light flashes.
3. Release "Bluetooth" and controller.

Setting lower limit

1. Adjust desk to minimum allowable height.
2. Press "Bluetooth" and press controller down at the same time until light flashes.
3. Release "Bluetooth" and controller.

RAISE OR LOWER YOUR DESK TO YOUR HEIGHT FAVORITES

To raise or lower your desk to your nearest height favorite:

1. Tilt and hold the controller in the direction you want to move.
2. When the desk stops, your height favorite is reached.

To raise or lower your desk beyond a height favorite, continue to tilt the controller until the desk moves again.

Tip: Enable "automatic drive"!

Reach a height favorite in just two taps of your controller. Download the mobile app and activate 'automatic drive' from the Settings tab.

www.imovr.com/lander-app



SET YOUR REMINDERS TO STAND

Jumpstart your active workday routine with the Lander Executive's standing reminders. Your default reminder is set for 90 minutes of sitting. When the color of your controller changes from green to orange, it's time to stand!

To change your reminder time (or turn it off), do the following:

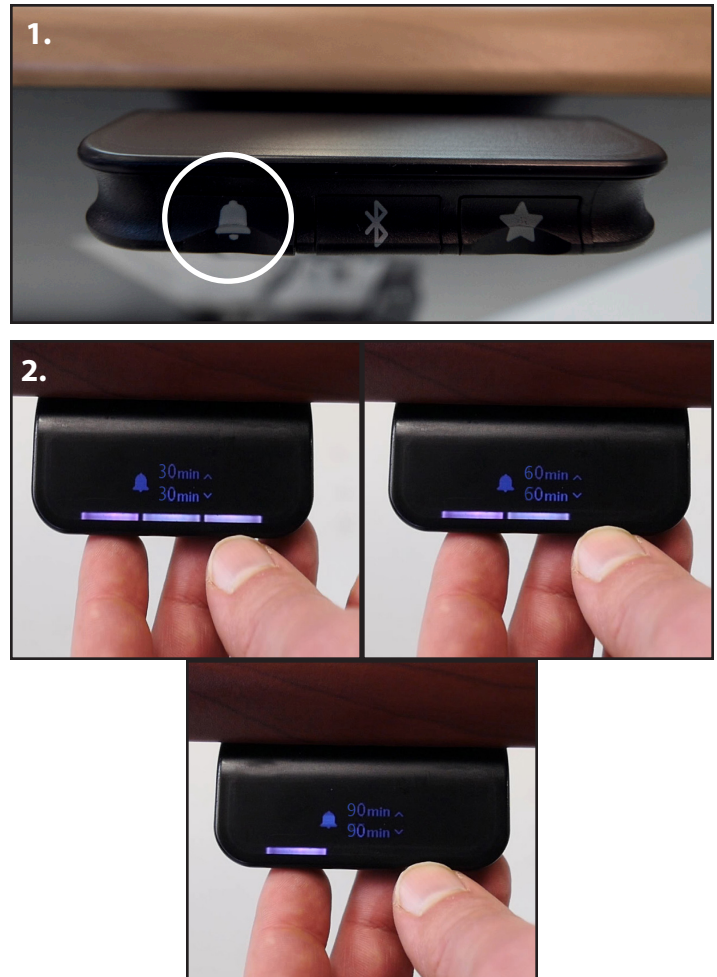
1. Tap the "Bell" button until the display shows your preferred time (90 min, 60 min, 30 min, or Off).
Note: Make sure not to tilt the controller.
2. Your reminder is set.

The reminder interval automatically restarts each time you adjust your desk to a sitting position.

Important: The controller does not remind you to sit, as you should do this whenever you feel your body needs to rest.

Tip: To set your own custom reminder intervals, download the mobile app for iOS or Android.

www.imovr.com/lander-app



MORE CONTROLLER OPTIONS

Initialization:

1. Lower desk to its lowest limit. Release paddle. Hold paddle down for 5 seconds. Release.

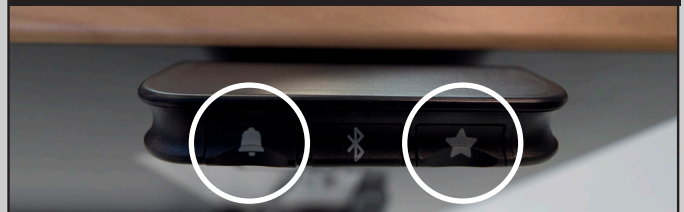
Factory Reset:

1. Press and hold the "Star" and "Bell" buttons together for 8 seconds.
2. When the controller flashes red 3 times, the factory reset is complete.
3. Once you have performed a Factory Reset, you **must** reinitialize your desk. (See initialization instructions above)

Height Calibration:

1. Press and hold the "Bell" and "Bluetooth" buttons together for 5 seconds. The height in the display will begin to blink.
2. Tilt the controller up or down until the display shows the correct height measurement. (The desk will not move, only the display will change.)
3. Press any button to confirm your choice.

Note: Make sure not to inadvertently tilt the controller during these steps.



Switch to Metric (cm):

1. Press and hold the "Star" and "Bluetooth" buttons together for 5 seconds. The current measurement unit blinks.
2. Tilt the controller once to change units.
3. Press any button to confirm your choice.